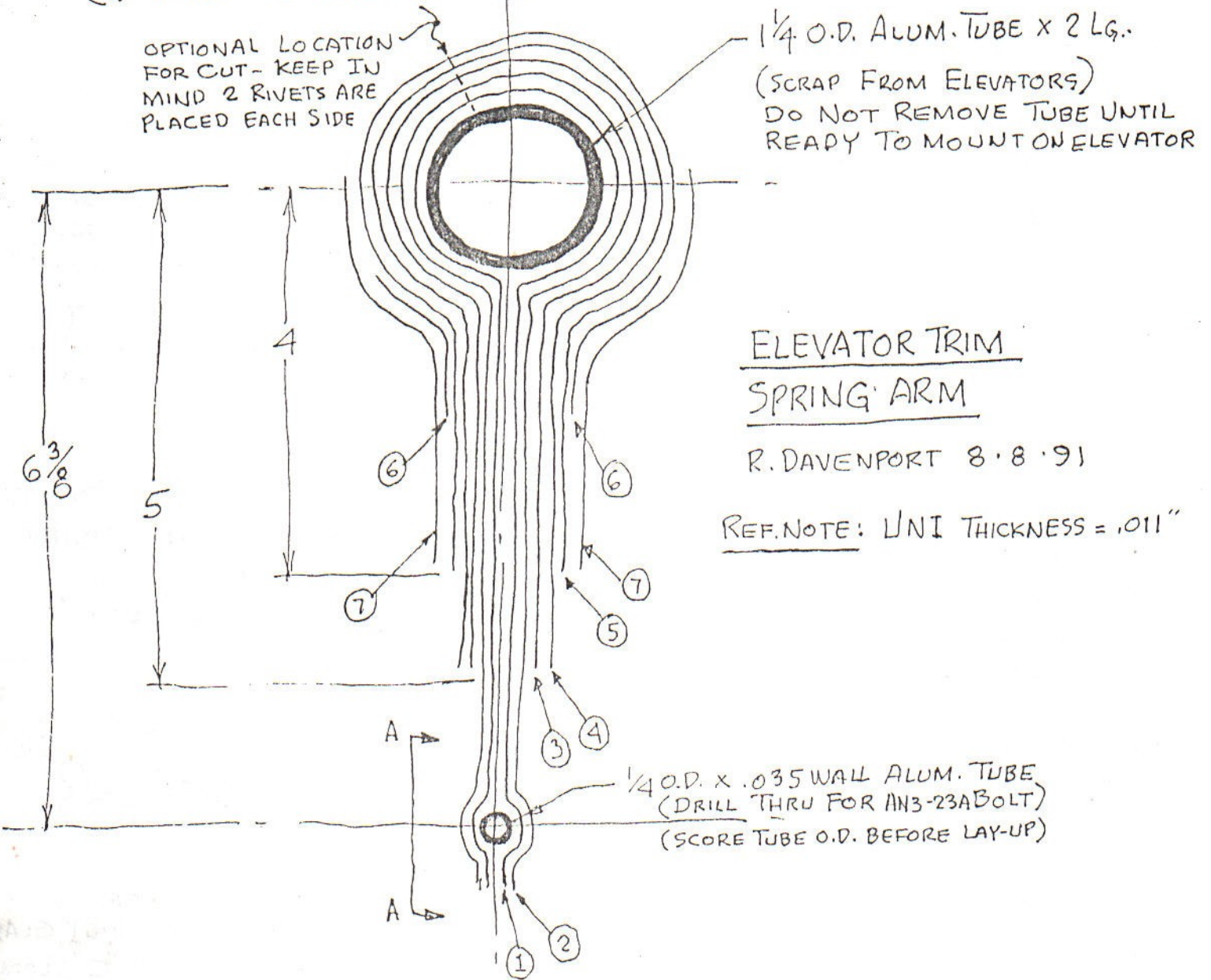


NOTE: AFTER CURE, CUT GLASS,
HEAT, & SPREAD TO REMOVE
TUBE. FLOX & POP-RIVET

(4) PLACES TO ELEVATOR TUBE



ELEVATOR TRIM
SPRING ARM

R. DAVENPORT 8.8.91

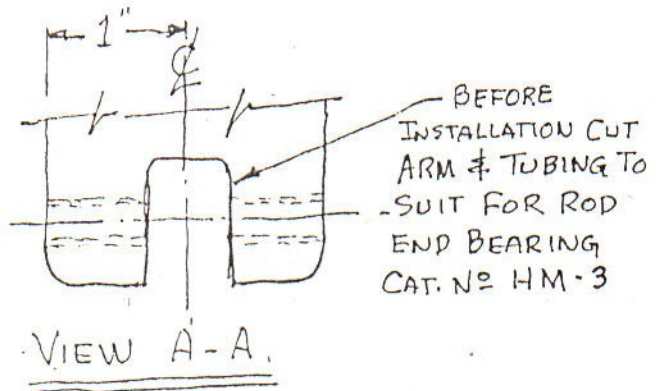
REF. NOTE: UNI THICKNESS = .011"

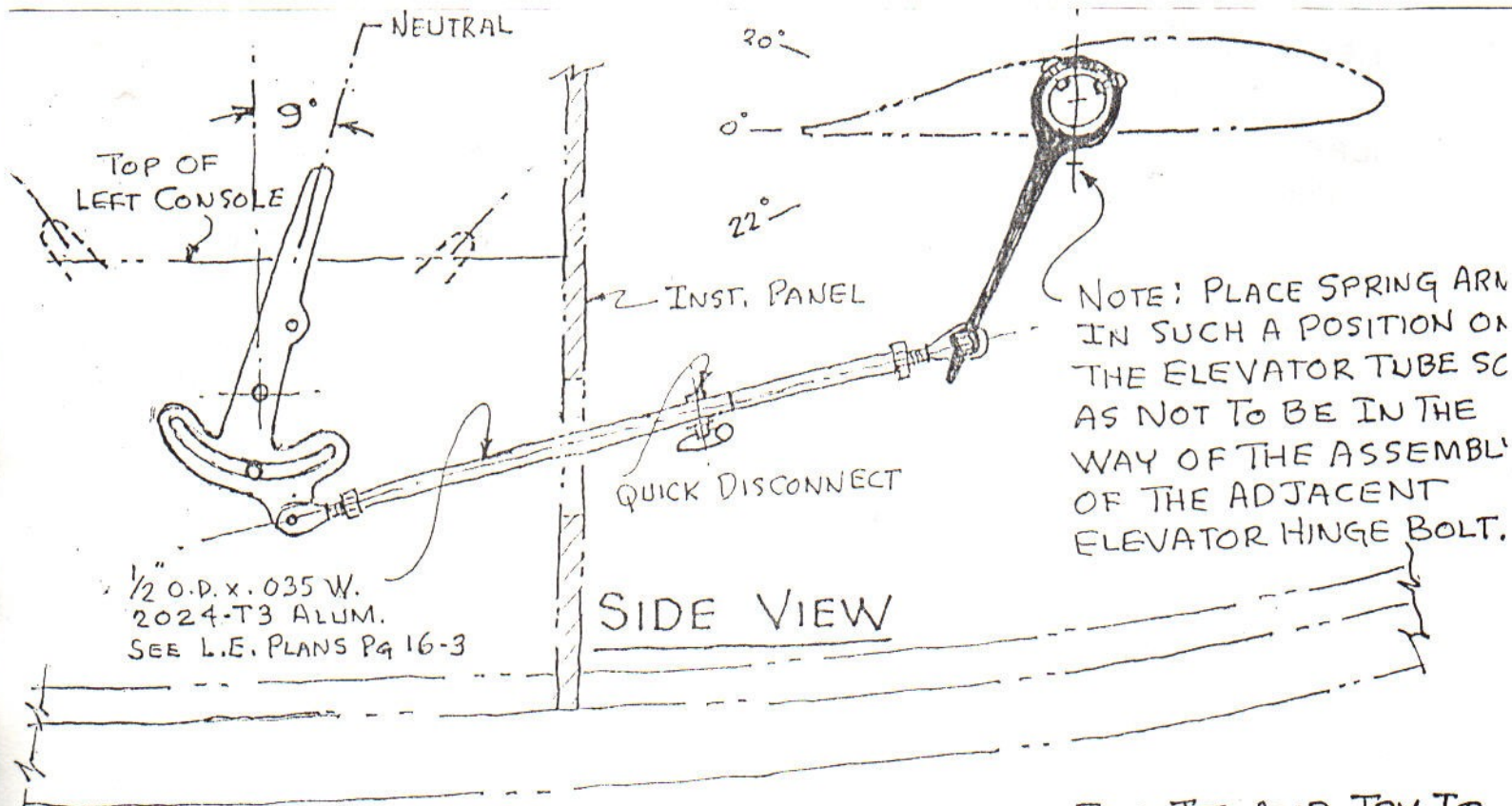
LAY-UP

SCHEDULE FOR GLASS

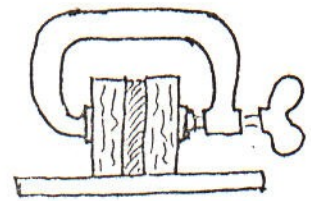
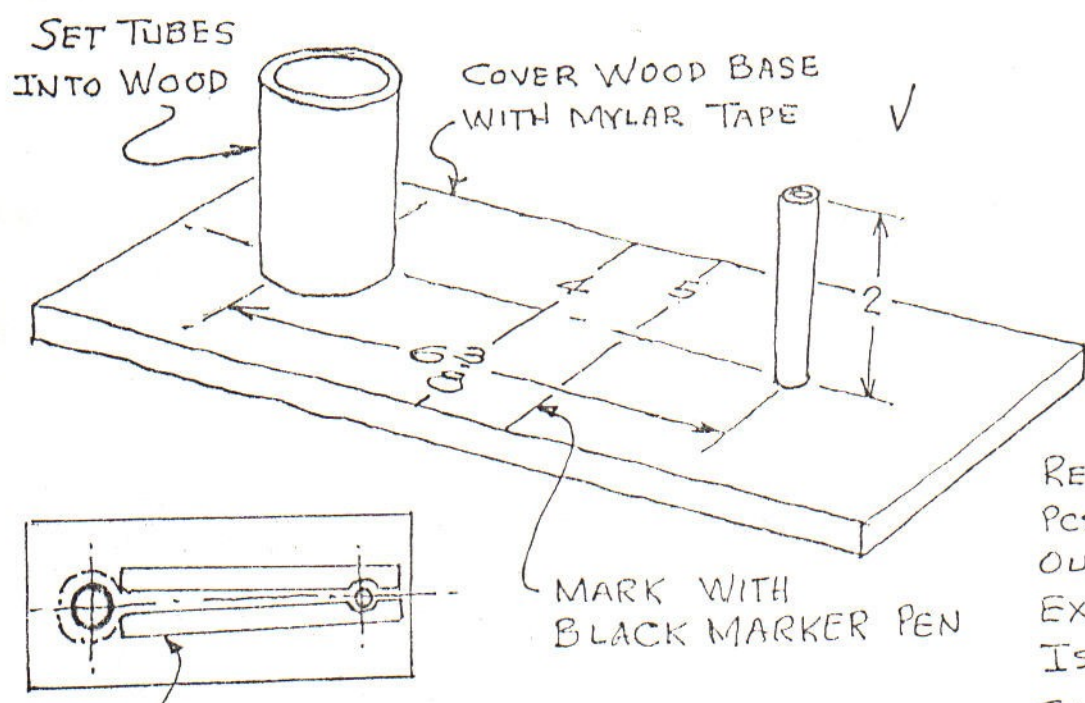
- ① & ② 17" x 2" EACH
- ③ & ④ 13 x 2 EA.
- ⑤ 11 x 2
- ⑥ 1 x 2 (2) REQ'D.
- ⑦ 4 1/2 x 2 (2) REQ'D.

NOTE: ALL GLASS IS UNI





NOTE: THE GLASS ARM IS RELATIVELY STIFF. FLY IT AND TRY IT, IF THE BUILDER PREFERS A LIGHTER TRIM BIAS, THEN USING YOUR DREMEL WITH SANDING DRUM DECREASE THE ARM THICKNESS A LITTLE AT A TIME UNTIL THE DESIRED "FEEL" IS ACHIEVED.



CLAMP WOOD PCS LIGHTLY AGAINST GLAS WITH SMALL "C" CLAMP UNTIL GLASS IS CURED

REMOVE CLAMPS & (2) WOOD PCS. CAREFULLY PUSH TUBE OUT OF WOOD & TRIM OFF EXCESS OF SMALL TUBE SO IT IS FLUSH WITH 2" WIDE GLASS ARM.

CUT (2) PCS OF WOOD 2" HIGH, SHAPED APPROX AS SHOWN, AND COVER INSIDE FACES WITH MYLAR TAPE.

ELEVATOR TRIM SPRING ARM LAY-UP & INSTALLATION INFO.